

INSTRUCTOR NOTES – UNIT 2: WINTER STORM SCENARIO

Objective:

To review the key concepts of ICS.

Instructions:

Ask the participants to work in teams to complete the following activity:

1. Review the scenario, resource list, and scenario map in your handouts.
2. Complete the following steps:
 - Identify who would assume leadership of the ICS organization.
 - Develop initial incident priorities and SMART objectives.
 - Draw an organizational chart to support the objectives and manage resources. Your organization should maintain an effective span of control and include Command and General Staff, where appropriate.
 - Describe the responsibilities delegated to the Command Staff and Sections that are activated.
3. Record your results on chart paper that can be seen by the entire class.
4. Select a spokesperson and be prepared to present in 30 minutes.

Emphasize that the spokespersons should be able to explain the rationale for the team's decisions.

Debrief:

Monitor the time. After 30 minutes, conduct a debrief as follows:

1. Have each team present its organizational chart.
2. Compare the similarities and differences among the charts presented. There is no one correct answer. However, proposed organizational structures should be consistent with ICS principles and terminology.
3. Have each team present the activities delegated. Call on different teams to take the lead on presenting the tasks delegated to the following:
 - Command Staff
 - Operations Section Chief
 - Planning Section Chief
 - Additional General Staff Positions

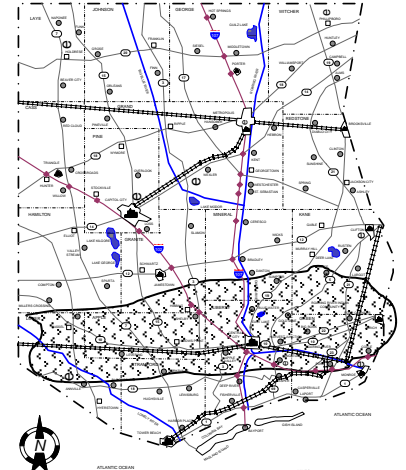
Scenario:

It is Sunday, December 21st in Central City. Families are doing last-minute Christmas shopping and preparing for the upcoming holiday. Inclement weather conditions over the last week have provided Central City and all of Liberty County with snow cover. County work crews, especially in the northern part of the county, are gearing down from the previous storm that brought 8 inches of snow to the area.

The National Weather Service has just issued another winter storm warning for the State of Columbia including all of Liberty County for Tuesday, Wednesday, and the early morning hours on Thursday the 25th. The NWS weather warning predicts heavy snow north of a line from Annville to Monroe with the heaviest accumulation expected south of State Highway 12. The warning will take effect at approximately 0600 on the 23rd and extends until noon on the 25th. Early predictions indicate the possibility of freezing rain on Monday afternoon turning to snow in the evening hours of Monday the 22nd with the possibility of 6 to 10 inches of snow falling on Tuesday and Wednesday.

Because Christmas falls on a Thursday this year, it is anticipated that there will be a significant increase in highway traffic on Tuesday all day and Wednesday morning as families travel to enjoy the long holiday weekend.

The Mayor of Central City has asked you to prepare objectives a staffing plan for the expected storm to include an ICS organization chart to support the objectives. An organizational chart for the Central City DPW is below.



Central City Department of Public Works Street Maintenance Division

The Street Maintenance Division provides for the following in Central City:

- Sweeping and cleaning of city streets
- Emptying of street litter containers
- Collection of trash and debris from city parks
- Collection of solid waste from residents and businesses in Central City
- Maintenance and repair of the storm water drainage system
- Maintenance and repair of asphalt and concrete pavements
- Pollution control
- Painting and marking of city streets
- Installation and repair of signs and traffic signals
- Installation and repair of fencing and guard rails
- Removal of snow from city streets

Central City is divided into two maintenance districts. The Corporation Yard at K and 23rd Streets is responsible for the area located west of the Roaring River and the Corporation Yard at X and 13th Streets is responsible for the area located east of the Roaring River.

The topography of Central City is such that there is a decided slope toward the Roaring River from the west and from the east. Storm water collection lines servicing the City run east and west along the even numerical streets, ultimately discharging into the Roaring River. Storm drains range in size from 12 to 48 inches in diameter.

Central City Department of Public Works Water and Sewer Division

Water Supply: Central City requires 40 million gallons of water per day under normal conditions. The Central City Water and Sewer Division, supervised by an assistant public works director, is under the direction of the Central City Public Works Department. The water supply is from a raw water intake located in the Roaring River and three large wells within the city limits. All surface water is treated by one 40 mgd plant located at S and 3rd Streets. The wells, located at LL and 20th, M and 34th, and FF and 4th Streets, are used only in an emergency and at peak production. Each well has a daily capacity of 650,000 gallons per day which can be pumped directly into the distribution system after onsite chlorination. All pumps are operated by electric power.

Water Storage: Storage consists of two 10-million gallon ground storage tanks and four one-million gallon elevated storage tanks. The 10-million gallon tanks are located at M and 34th and LL and 15th Streets. The elevated storage tanks are located at K and 15th, N and 30th, KK and 26th, and DD and 2nd streets. Central City has no access to any outside source of water; however, its treatment plant is modern, and is supplied by overhead lines of short lengths from 12MV distribution lines.

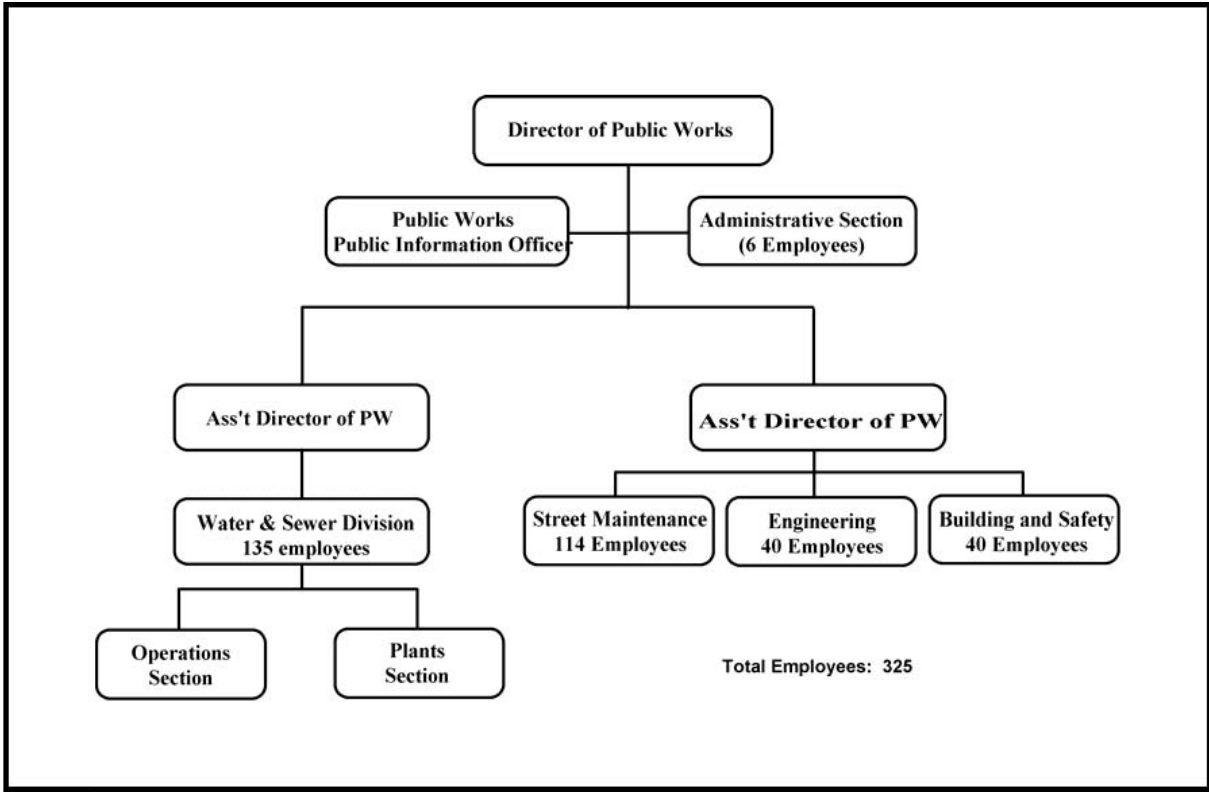
Water Distribution: There is at least a 6-inch water main in every street. Only 12-foot and larger mains are shown on the water map. Hydrants are spaced 400 feet apart, valved, and have a minimum fire flow of 2,500 gpm. Valves are on all legs of a node 10 inches and smaller. Valves are spaced 2,000 feet on 12 inches, 4,000 feet on 16 inches, 5,500 feet on 24 inches, and 8,000 feet apart on 38-inch pipe. Minimum pressure at any hydrant is 40 psi.

Sewerage Treatment and Collection: The Central City sewerage system has two major collection interceptors, one on each side of the river, which follow the Roaring River south to a 50-mgd advanced tertiary treatment plant. The plant has activated sludge, phosphate removal, UV disinfectant, and fluidized bed incinerator for sludge treatment with disposal of ash to the landfill.

The effluent discharges to the Roaring River. There is a stringent retreatment program for industrial and commercial customers. The 50-mgd plant is located along the Roaring River just north of I-102.

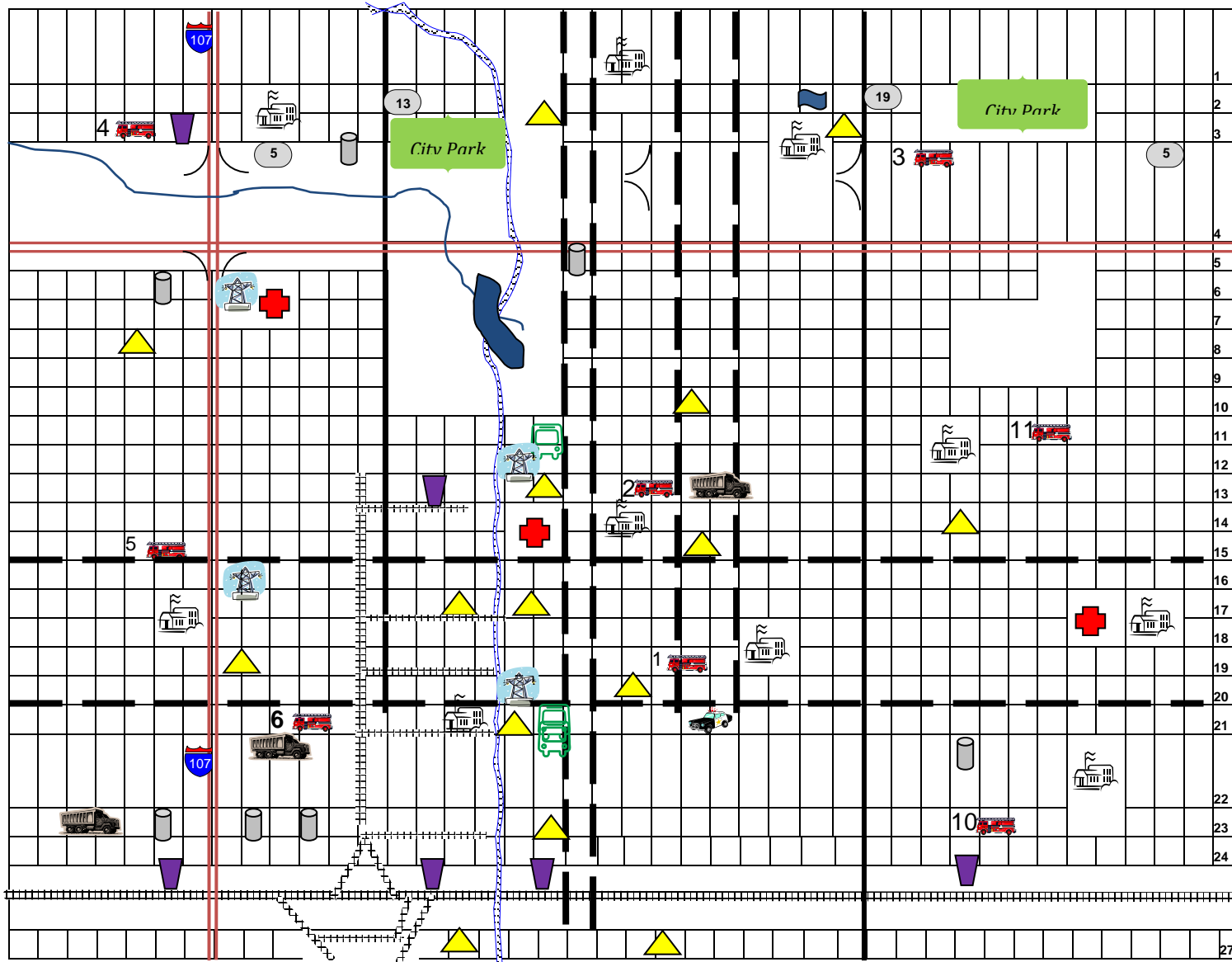
Administration: The Water and Sewer Division has 68,000 service connections to serve the residents and businesses of Central City. Water meter sizes range from $\frac{3}{4}$ inch to 12 inches, and backflow prevention is required for all commercial, institutional, and industrial customers. Sewer connection sizes range from 4 inches to 18 inches.

Under the Assistant Director of Public Works, the division is broken down into two main sections, Operations and Plants. The Plants section is responsible for the operation and maintenance of all water and sewer plants, intake structures, and 21 waste water pumping stations. The Plants section also maintains the SCADA system that monitors all of the major facilities of the department. The Operations section is responsible for all other functions, distribution, collection, engineering, meter reading and billing/customer service. The Operations section operates out of the maintenance yard number 1, located at X and 13th Streets, Central City.

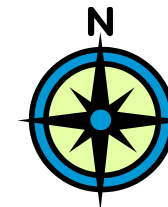
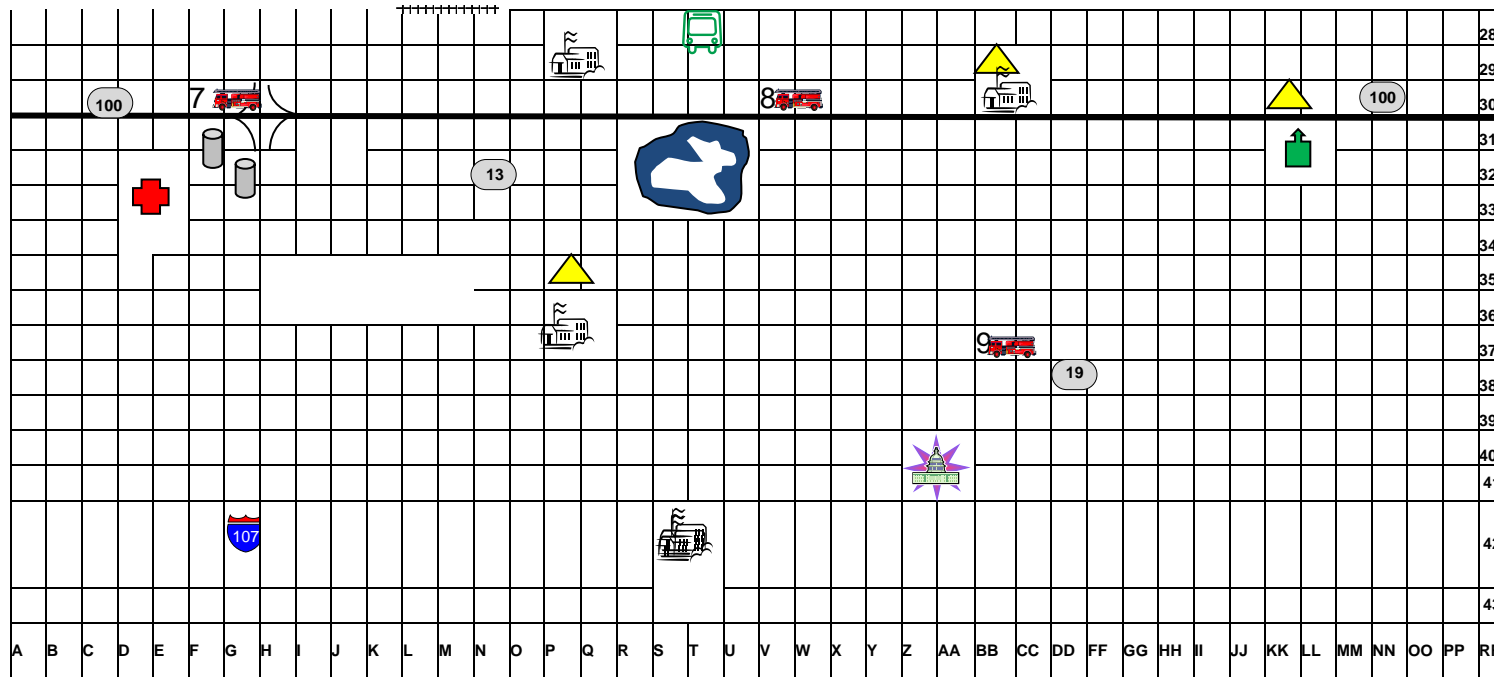


Unit 2. ICS Fundamentals Review

Map:



Unit 2. ICS Fundamentals Review



	Police Station		Fire Station		Hospital		Schools
	Shelter		DPW Yard		Electric Power Station		Radio/TV Stations
	National Guard Armory		Fuel Storage Facility		Food Warehouse		EOC
	Bus Stop/Transportation		Railroad		Highway		Interstate
	Major Arterials		Water Reservoir				

Unit 2. ICS Fundamentals Review

Central City Department of Public Works Street Maintenance Division Corporation Yard #1 Location: X & 13th Streets	
Sedan Supervisor 1 3/4 t pickup w/ compressor Supervisor 1 3/4 t pickup Supervisor 1 4 yd. dump w/ compressor Drainage 3 4 yd. dump Drainage 3 Camel truck Drainage 2 4 yd. insulated box dump Street repair 3 Tractor w/lowboy Transportation 1 8 yd. dump w/ compressor Paving, utility 2 8 yd. dump Paving, utility 1 25 yd. tractor-trailer Solid waste transfer 1 Flatbed w/lift gate Utility 1 Cat D-8 dozer Excavation & grading 1 Motor grader Utility 1 Motor grader Utility 1 Power sweeper Street cleaning 1 Power sweeper Street cleaning 1 Power sweeper Street cleaning 1 4 yd. self-loading dump Utility 1 4 yd. self loading dump Utility 1 Backhoe Excavation 1 Backhoe Excavation 1 Rubber tired dragline Levee & ditch maintenance 1 Truck crane, 1/2 yd. bucket Utility 1 1/2t pickup Complaint, inspection 1 1/2t pickup Complaint, inspection 1 1/2t pickup Complaint, inspection 1 1/2t pickup Complaint, inspection 1 Packer truck Solid waste collection 3 Packer truck Solid waste collection 3 Packer truck Solid waste collection 3 Packer truck Solid waste collection 3 3000 gal. tank truck Flushing 1 G-660 Gradall Large conduit repair 2 8 yd. dump Large conduit repair 1 8 yd. dump Large conduit repair 1 Snow blower Snow removal 1	Fuel 5,000 gallons of diesel 12,000 gallons of gas Barricades 100 Crowd Control Barricades 25 Sandbags 1,000 Traffic Signal Controllers 6 Signal Poles 15 Portable Light Sets 2 Portable Radios 6 Portable Toilets 2 Traffic Delineators 150 Concrete Pipe 300 feet of various sizes Sand 5 cubic yards Temporary Paving Material 10 cubic yards Base Rock 50 cubic yards Bags of Cement 250 Sheets of Plywood 200 Manholes Frames and Covers 50 Inlet Grates 25 Manhole Concrete Rings and Cones 50 Lumber 100 sections of 2" x 4" 25 sections of 2" x 6" 50 sections of 2" x 8" 25 sections of 2" x 12" Chain Link Fence 5 rolls of 6' high / 50' in length Guard Rail Sections 25 Tire Chains Available for all equipment Snow Plow Units Available for all trucks Radar Lights 50 Hard Hats 40 Shoring Sets 10

Unit 2. ICS Fundamentals Review

Central City Department of Public Works Street Maintenance Division Corporation Yard #2 Location: K & 23rd Streets (Even Numbers Only)	
Sedan Supervisor 1 3/4 t pickup Supervisor 1 3/4 t pickup Supervisor 1 4 yd. dump w/ compressor Drainage 3 4 yd. dump w/A frame Drainage, utility 2 Camel truck Drainage 2 Camel truck Drainage 2 4 yd. insulated box dump Street repair 3 8 yd. dump w/ compressor Paving, utility 2 8 yd. dump Paving, utility 1 8 yd. dump Paving, utility 1 Flatbed Utility 2 Motor grader Utility, ditch work 1 Motor grader Utility, ditch work 1 Motor grader Utility, ditch work 1 Power sweeper Street cleaning 1 Power sweeper Street cleaning 1 Power sweeper Street cleaning 1 4 yd. self-loading dump Utility 1 4 yd. self-loading dump Utility 1 4 yd. self-loading dump Utility 1 Backhoe Excavation 1 Dragline, 1 1/2 yd., track Excavation, debris & removal 2 10T roller Paving 1 10T roller Paving 1 10T roller Paving 1 1/2t pickup Complaint, inspection 1 1/2t pickup Complaint, inspection 1 1/2t pickup Complaint, inspection 1 1/2t pickup Litter control 1 1/2t pickup Litter control 1 1/2t pickup Litter control 1 Packer truck Solid waste collection 3 Packer truck Solid waste collection 3 Packer truck Solid waste collection 3 Packer truck Solid water collection 3 Packer truck Solid waste collection 3 250gpm pump on trailer Pumping 0 250gpm pump on trailer Pumping 0 250gpm pump on trailer Pumping 0 250gpm pump on trailer Pumping 0 250gpm pump on trailer Pumping 0 Aerial truck Traffic signal maintenance 2 Aerial truck Traffic signal maintenance 2 Snow blower Snow removal 1	Fuel 5,000 gallons of diesel 12,000 gallons of gasoline Barricades 100 Crowd Control Barricades 25 Sandbags 1,000 Traffic Signal Controllers 6 Signal Poles 15 Portable Light Sets 1 Portable Radios 6 Portable Toilets 2 Traffic Delineators 175 Concrete Pipe 300 feet of various sizes Sand 5 cubic yards Temporary Paving Material 10 cubic yards Base Rock 50 cubic yards Bags of Cement 250 Sheets of Plywood 200 Manholes Frames and Covers 50 Inlet Grates 25 Manhole Concrete Rings and Cones 6 Lumber 100 sections of 2" x 4" 25 sections of 2" x 6" 50 sections of 2" x 8" 25 sections of 2" x 12" Chain Link Fence 5 rolls of 6' high/50' in length Guard Rail Sections 25 Tire Chains Available for all equipment Snow Plow Units Available for all trucks Hard Hats 30 Flashlights 30 Shoring Sets 20 Rubber boots 10 pair Gloves 40 pair Disposable respirators (dust, vapor, HEPA) 20 Duct tape 5 rolls Goggles 10 pair Combustible gas meter 1 Confined space entry harness kit 1 Barricade tape 5,100' rolls

INSTRUCTOR NOTES – UNIT 3: WINTER STORM SCENARIO

Objective:

To apply key principles of Unified Command.

Instructions:

Ask the participants to work in teams to complete the following activity:

1. Review the scenario update and resource list in your handouts.
2. Complete the following steps:
 - List who would be included in the Unified Command structure.
 - Describe the challenges facing the Unified Command.
 - Describe the strategies the Unified Command structure will use to address these challenges and facilitate information flow and coordination.
3. Select a spokesperson and be prepared to present your work in 30 minutes.

Debrief:

Monitor the time. After 30 minutes, conduct a debrief as follows:

1. Ask one team to present whom they would include in the Unified Command structure.
2. Ask the other teams if they had different responses. Compare the similarities and differences among the teams. There is no one correct answer.
3. Next, ask a different team to present the challenges and strategies. After the team presents, ask the other teams if they identified different challenges and strategies.
4. Summarize the key learning points.

Instructor Note: There is not enough tactical information provided to develop specific tactical assignments. Keep the participants focused on the issues associated with the establishment of Unified Command.

Unit 3. Unified Command

Scenario Update:

It is now Monday evening around 2000 hours. It has been a cold and rainy day. The National Weather Service (NWS) reports that in the path of the storm temperatures are currently in the low 30's, and snow has been falling for the past 4 hours with accumulations of up to 1.5 inches reported. Gusting winds of 25 to 45 mph coming out of the southwest have brought wind chill estimates down to -15°.

Central City has begun sanding and salting operations due to the icy road conditions. Reports from 911 dispatchers indicate that major roads in the city are ice covered and slippery. Traffic volume on I-107, Hwy 13, Hwy 100, and Hwy 19 has begun to increase as people travel to their holiday destinations.

Because of the icy road conditions, many truck stops and waysides are beginning to fill with semi-trucks. Many of the ramps also have trucks parked on them, apparently choosing to wait out the storm. Local hotels and motels are beginning to fill with travelers who are either visiting the city or wish to wait out the storm. The shopping malls are crowded with holiday shoppers hoping to take advantage of last-minute deals and complete their shopping before the storm gets worse.

The mayor has asked you to work with other city agencies to provide for public safety during this storm, with special emphasis on clearing major arteries for traffic and emergency vehicles and maintaining access to hospitals, fire stations, EMS buildings, and police precincts.

Resources: (in addition to those listed in Unit 2)

Resource	Kind	Number & Type
Central City Police	Patrol Car	4 marked units: M-1, M-2, M-3, and M-4 2 unmarked units: M-5 and M-6
Liberty County Sheriff	Patrol Car	6 marked units: O-1, O-2, O-3, O-4, O-5, and O-6
State Police	Patrol Car	1 marked unit: SP-1 1 unmarked unit: SP-2
Central City Fire/Rescue	Engine Company Truck Company Rescue Company Heavy Rescue	3 companies: ME-1, ME-2, and ME-3 2 companies: MT-1 and MT-2 1 company: MR-1 MHR-1
Central City EMS	BLS ALS Medevac Off-Duty Personnel (full time and volunteer)	3 units: MBLS-1, MBLS-2, and MBLS-3 2 units: MALS-1 and MALS-2 Lifelight 324CC Helicopter 33
Central City Public Works	Front-End Loaders 8 yd Dump Trucks w/plows Motor Grader ¾ Ton Pickup w/plows ½ Ton Pickup w/plows Snow Blowers	3 5 5 4 10 2
Other Local EMS	BLS ALS	5 units: OBLS-1, OBLS-2, OBLS-3, OBLS-4, and OBLS-5 2 units: OALS-1 and OALS-2

Critical Issues:

- Keep major arteries cleared of snow and ice and passable for traffic
- Ensure access to hospitals, fire stations, police precincts and EMS stations
- Provide for life safety issues for travelers and residents
- Maintain key lifeline functions, i.e., water, sewer, electric utilities, etc.
- Provide for adequate relief shifts for city workers
- Plan for and provide any additional resources that may be needed to maintain city streets and utilities

Your Notes:

INSTRUCTOR NOTES – UNIT 4: WINTER STORM SCENARIO

Objective:

To organize groups into Incident Management Teams; review ICS Form 201, Incident Briefing; and identify issues related to the simulated incident.

Instructions:

Ask the participants to work in teams to complete the following activity:

1. Review the scenario update in your handouts.
2. Assign an Incident Commander to the Unified Command, Safety Officer, Public Information Officer, Operations Section Chief, Planning Section Chief, Logistics Section Chief, and Finance/Administration Section Chief. If there are enough people in your group, you may also assign a Liaison Officer.
3. Develop incident objectives for the next operational period and revise organization as needed. Document your objectives on chart paper and the partially completed ICS Form 201. Make sure your objectives are SMART!
4. Select a spokesperson and be prepared to present your work in 30 minutes.

Debrief:

1. Ask the teams to hang the chart paper with their incident objectives and organization (if different than on Form 201) in a location where the entire class can view them.
2. Select a team to present its incident objectives.
3. Compare the team's proposed incident objectives to those proposed by the other groups. Emphasize that there is NO one correct solution. Point out the similarities and differences. Where there are different solutions, ask the team spokesperson to present the reasons why the team chose a different objective or organizational structure. Continue this process until all of the potential objectives have been discussed.
4. Next ask the Public Information Officer from the first group to identify an issue related to public information on this incident.
5. Ask the Public Information Officer from the second group to identify another issue. Repeat until all groups have reported and no more issues are identified.
6. Repeat steps 4 and 5 for each member of the Command and General Staff. Have the Incident Commanders report last. Ask the Incident Commanders if they have confidence that the Command and General Staff have addressed all the issues related to the incident.

Scenario Update:

It is Tuesday the 23rd at approximately 1200 hours. NWS reports snow has been falling since 0300 hours and there are accumulations of up to 3 to 6 inches already, with the heaviest accumulation occurring in an area north of a line from Annville to Monroe and south of State Highway 12. Within this area the snow continues to fall at a rate of 1.5 inches per hour with southwesterly winds at 20-30 mph. The storm appears to be stalled over this area, slowly moving to the northeast at approximately 5 mph.

911 call centers are receiving reports of icy conditions, minor accidents, and congestion on the major streets. Motorists and patrol officers are calling in asking for tow trucks to assist with stranded vehicles. High winds along with ice buildup on trees and power lines are causing power lines and poles to fall, resulting in sporadic power failures in the city.

911 centers are reporting a greatly increased call volume, although there are few calls for accidents involving property damage. 911 is receiving numerous calls for tow trucks including assistance for a semi that has jack-knifed in the northbound lanes of I-107 near the 16th Street interchange, and several stranded motorists on Hwy 19 north of the city.

911 has received numerous calls for assistance from motorists complaining of being stuck in the southbound lanes of Hwy 19, between 8th and 1st streets.

Central City Officers are reporting worsening road conditions and are having great difficulty in responding to the increased calls for assistance. County 911 operators report that they are being inundated with calls from people reporting slide-offs or minor accidents and people reporting loss of electrical power due to the storm. Hotels and motels in Menomonee are now full to capacity and are turning people away.

DPW personnel are fatigued and looking for a relief shift. Many personnel are reporting that their families are out of power due to the downed power lines and they are concerned about the safety of their families.

Unit 4. Incident/Event Assessment and Incident Objectives

1. Incident name Winter Storm	2. Incident Number 1	3. Date/Time Initiated Date 22-Dec Time										
4. Map/Sketch (include sketch, showing the total area of operations, the incident site/area, impacted and threatened areas, oversight results, trajectories, impacted shorelines, or other graphics depicting situational status and resource assignment):												
5. Situation Summary and Health and Safety Briefing (for briefings or transfer of command): Recognize potential incident Health and Safety Hazards and develop necessary measures (remove hazard, provide personal protective equipment, warn people of the hazard) to protect responders from those hazards.												
<p>The National Weather Service has just issued another winter storm warning for the State of Columbia including all of Liberty County for Tuesday, Wednesday, and the early morning hours on Thursday, the 25th. The NWS weather warning predicts heavy snow north of a line from Anville to Monroe with the heaviest accumulation expected south of State Highway 12. The warning will take effect at approximately 0600 on the 23rd and extends until noon on the 25th. Early predictions indicate the possibility of freezing rain on Monday afternoon turning to snow in the evening hours of Monday the 22nd with the possibility of 6 to 10 inches falling on Tuesday and Wednesday. Currently maintaining all equipment at the optional readiness. Personnel have been rescheduled to accommodate potential 16-hour shifts to keep all roads cleared. Personnel have been advised to be on standby through December 26th. Sand and salt inventories completed and additional supplies have been ordered. Private haulers and plowers have been put on alert. Meetings and briefings are scheduled with Law Enforcement, Fire Department, and EMS.</p>												
6. Prepared by: <table border="1"> <tr> <td data-bbox="191 1766 435 1818">Name</td> <td data-bbox="435 1766 607 1818">Joe Jones</td> <td data-bbox="607 1766 886 1818">Position/Title</td> <td data-bbox="886 1766 980 1818">OPS</td> <td data-bbox="980 1766 1443 1818">Signature</td> </tr> <tr> <td data-bbox="191 1818 435 1845">ICS 201, Page 1</td> <td></td> <td></td> <td></td> <td data-bbox="980 1818 1443 1845">12/22/20XX</td> </tr> </table>			Name	Joe Jones	Position/Title	OPS	Signature	ICS 201, Page 1				12/22/20XX
Name	Joe Jones	Position/Title	OPS	Signature								
ICS 201, Page 1				12/22/20XX								

Unit 4. Incident/Event Assessment and Incident Objectives

1. Incident name		2. Incident Number			3. Date/Time Initiated	
Winter Storm		1			Date	12/22/20XX
10. Resource Summary						
Resource	Resource Identifier	Date/Time Ordered	ETA	Arrived	Notes (location/assignment/status)	
Front End Loader					Yard #1 X & 13th St	
Front End Loader					Yard #2 K & 23rd St	
Front End Loader					Yard #2 K & 23rd St	
8 yd dump w/plow					Yard #2 K & 23rd St	
8 yd dump w/plow					Yard #2 K & 23rd St	
8 yd dump w/plow					Yard #2 K & 23rd St	
8 yd dump w/plow					Yard #2 K & 23rd St	
8 yd dump w/plow					Yard #1 X & 13th St	
8 yd dump w/plow					Yard #1 X & 13th St	
8 yd dump w/plow					Yard #1 X & 13th St	
8 yd dump w/plow					Yard #1 X & 13th St	
Motor Grader					Yard #1 X & 13th St	
Motor Grader					Yard #1 X & 13th St	
Motor Grader					Yard #2 K & 23rd St	
Motor Grader					Yard #2 K & 23rd St	
Motor Grader					Yard #2 K & 23rd St	
3/4 ton pickup w/plow					Yard #1 X & 13th St	
1/2 ton pickup w/plow					Yard #2 K & 23rd St	
Snow blowers					Yard #2 K & 23rd St	
6. Prepared by: Name		Position/Title		OPS	Signature	
Joe Jones						
ICS 201, Page 4		Date/Time		12/22/20XX		

INSTRUCTOR NOTES – UNIT 5: WINTER STORM SCENARIO

Objective:

To allow participants to complete the planning cycle by conducting a planning meeting, developing a written IAP, and conducting an operations briefing for a simulated incident. This scenario continues to build on the Winter Storm activity.

Instructions:

Ask the participants to work in teams to complete the following activity:

1. Complete the ICS Form 215 for resources. Point out that the Operational Planning Worksheet (ICS Form 215) has the information needed to complete tactical direction for the winter storm situation.
2. Based on the tactics selected in the ICS Form 215, complete the Safety Analysis (ICS Form 215A).
3. Prepare an Incident Action Plan, using (at a minimum) ICS Forms 202, 203, 204(s), 205, and 206.
4. Outline the agenda for the operations briefing.
5. Select a spokesperson to present your IAP as a concise 5- to 10-minute operations briefing. Be prepared to present in 60 minutes.

Provide participants with blank copies of the ICS Forms.

Debrief:

Monitor the time. After 1 hour, call time. The report out may be structured in two ways.

Option 1: Have each IMT conduct its briefing to the class as a whole. In this option, the entire class role-plays the oncoming operations function. Each team takes a turn as the team presenting the operations briefing.

Option 2: Pair up two teams together. Have the teams take turns presenting the briefings to each other as follows:

Round 1

- Team 1: Present the operational period briefing.
- Team 2: Participate as resources being briefed. Ask questions as appropriate.

Round 1 Feedback

- Team 1 Self-Assessment: Strengths of Plan and Presentation and Areas for Improvement
- Team 2 Peer Feedback
- Instructor Feedback

Round 2

- Reverse roles and have Team 2 present and Team 1 play the role of the resources being briefed.

Scenario Update:

It is now approximately 1400 hours on Tuesday. 911 has received a call from a motorist reporting a multiple-vehicle crash involving at least three semi-trucks and several cars near the southwest off-ramp on I-5 at the I-107 interchange. The caller thinks there are multiple injuries with a possible entrapment, but due to weather conditions causing poor visibility, is unable to determine the full extent of the situation. The caller reports that the accident is completely blocking the westbound lanes and there are numerous cars and trucks stuck behind the accident. This information, along with the numerous other calls concerning this incident, has been forwarded to the Central City Police.

The snow continues to fall, with accumulations of up to 10 inches. Snowplow operators, Patrol Officers, and fire crews are reporting that streets are snow covered, slippery, and nearly impassable. Numerous requests for assistance are being received by all 911 centers, and dispatchers continue to be inundated with calls. Nursing home administrators are concerned about the possibility of power outages and are calling to ask if assistance will be available in the event of a forced evacuation. Up to 450 homes are currently without electricity.

DPW personnel are asking to leave work early to return to their homes to check on families. Fire crews have reported that the intersection of X and 31st Streets, near Station 8, is very wet and icy and it appears that there is the possibility of a water main break at that location.

The Mayor of Central City will be holding a news conference at 1400 hours today and would like a brief on the most up-to-date information.

The next operational period will begin at 1800 tonight and end at 0600. Incident objectives for the next operational period include:

- Maintaining all primary and secondary streets in passable driving condition.
- Continuing to provide all lifeline service to the community.
- Providing for the safety and well-being of DPW personnel families.
- Executing all operations without injury to DPW personnel or people in Central City.
- Maintaining access to all hospitals, fire stations, police precincts, public transportation, and EMS garages during and after the storm.

Unit 5. Planning Process

Resources:

Resource	Kind	Number & Type
Central City Police	Patrol Car	4 marked units: M-1, M-2, M-3, and M-4 2 unmarked units: M-5 and M-6
Liberty County Sheriff	Patrol Car	6 marked units: O-1, O-2, O-3, O-4, O-5, and O-6
State Police	Patrol Car	1 marked unit: SP-1 1 unmarked unit: SP-2
Central City Fire/Rescue	Engine Company Truck Company Rescue Company Heavy Rescue	3 companies: ME-1, ME-2, and ME-3 2 companies: MT-1 and MT-2 1 company: MR-1 MHR-1
Central City EMS	BLS ALS Medivac Off-Duty Personnel (full time and volunteer)	3 units: MBLS-1, MBLS-2, and MBLS-3 2 units: MALS-1 and MALS-2 Lifelight 324CC Helicopter 33
Other Local EMS	BLS ALS	5 units: OBLS-1, OBLS-2, OBLS-3, OBLS-4, and OBLS-5 2 units: OALS-1 and OALS-2

(For DPW resources, see resource list from Unit 2.)

Additional Available Resources:

<p>National Guard: 80 personnel 5 five-ton trucks 1 engineer unit with 8 personnel 2 heavy front-end loaders 1 bulldozer</p>	<p>Incident Communications Central City and Liberty County have a shared 800-mHz radio system. Talk Groups include:</p> <ul style="list-style-type: none"> ▪ Fire: Talk Groups 1, 2, 3 ▪ Law Enforcement: Talk Groups 4, 5, 6 ▪ EMS: Talk Groups 7, 8 ▪ Regional Mutual Aid: Talk Groups 9, 10 ▪ State Mutual Aid: Talk Group 11
<p>State Police: 15 marked units Hazardous Materials Response Team</p>	<p>Air Operations: 2 Black Hawk helicopters and support assets capable of basic medical transport 3 State Police helicopters, MEDEVAC equipped</p>

Your Notes:

INSTRUCTOR NOTES – UNIT 6: WINTER STORM SCENARIO

Objective:

To allow participants to gain an understanding of how resources are ordered and to understand the challenges and strategies for managing resources during an incident.

Instructions:

Ask the participants to work in teams to complete the following activity:

1. Review the Operational Planning Worksheet (ICS Form 215) and Safety Analysis (ICS Form 215A) completed in the previous unit.
2. Describe how resources will be ordered (single point or multipoint) for this incident, from what sources resources will be acquired, and how long they will need to be deployed.
3. Identify the top challenges and strategies for managing resources during this incident.
4. Describe the method for evaluating resource effectiveness.
5. Select a spokesperson and be prepared to present your work in 30 minutes.

Debrief:

Monitor the time. After 30 minutes, call time. Then conduct a debrief as follows:

1. **Emphasize that there is NO one correct solution.**
2. Ask the team spokesperson to present its team solutions.
3. Discuss the similarities and differences among the team responses and rationales for their answers.

Your Notes:

INSTRUCTOR NOTES – UNIT 7: WINTER STORM SCENARIO

Objective:

To develop a Demobilization Plan for a simulated incident.

Instructions:

Tell the participants to work in teams to complete the following activity:

1. Review the information you developed in all of the previous Winter Storm activities and the scenario update.
2. Write a Demobilization Plan using the five elements described in Unit 7.
3. Develop a detailed agenda for a closeout briefing to be presented to the Mayor of Central City.
4. Select a spokesperson and be prepared to present your work in 45 minutes.

Debrief:

1. Ask one group to present their Demobilization Plan using the briefing format.
2. Ask the remainder of the class to provide feedback on the plan.
3. Provide any additional feedback based on the criteria below.

Demobilization Plan Criteria:

- No personnel or equipment are to be released without specific instructions.
 - Logistics will manage transport of personnel/equipment.
 - Criteria for safe release of personnel, including medical issues, must be included.
 - Reporting criteria to Demobilization Unit Leader must be included.
 - Travel parameters, notification upon arrival, and timeframes must be included.
 - Release priorities must be determined.
 - Release procedures must be determined.
 - Agency policy is that the Command and General Staff will demobilize as a group after the final transfer of command to the cleanup company and agency closeout.
4. Continue with this process until all groups have presented.

Scenario Update:

It is 1200 hours on Wednesday, December 24th. NWS has lifted the winter weather advisory for the Central City area. Most of the snowfall dissipated during the previous evening and work crews were able to clear the major streets and have begun final clearing on the secondary streets. Power company crews have worked steadily for the last 24 hours and have restored power to nearly all of the affected homes.

Reports from other parts of the county indicate that neighboring jurisdictions, although equally hard hit by the storm, are also doing final clearing, plowing, and salting and are beginning to stand down their personnel for the holiday.